



Farm Dog Days of Summer

June 9-10, 2018

2 ASCA All-Breed Farm Dog Trials

(sheep/cattle/ducks/mixed)

Hardrock Farm in Cartersville, GA

Pre-entries open April 23, 2018. Pre-entries must be postmarked prior to closing date May 23, 2018.

Entries must have clearly visible USPS postmark. No meter mail allowed. No DHL. UPS, telephone, email, or faxed entries will be accepted. Overnight entries accepted only if signature is waived. Day of entries will be happily accepted for any available class. The waiting list will be used in the event of competitor withdraw or no-show.

Make checks payable to GAASC. Mail entries to GAASC, Wendy Eldredge 155 Reynolds St SW Marietta, GA 30064.

Judges: Rachel Vest of Jefferson, GA on Saturday Wayne Kirby of Carrollton, GA on Sunday
Course Director: Terry Dickey Farm/Stock Owner: Cheryl Padgett Trial Secretary: Wendy Eldredge
terrydickey17@yahoo.com hardrockaussies@yahoo.com wigglywendy@yahoo.com

Pre-entries: Cattle \$60, Mixed \$50, Sheep \$50, Ducks \$40, day of entries additional \$10 each class of stock

Cattle (beef mix-breed), Mixed Sheep/Ducks, Sheep (hair mix-breed), Ducks (mix-breeds). Stock head count will be 5 cattle, 5 sheep, 5 ducks and 5 each sheep and ducks for the mixed. Entries will be limited to less than 10 hours of judging time with a maximum of 9 cattle runs each day. Run order will be random draw and begin with advanced.

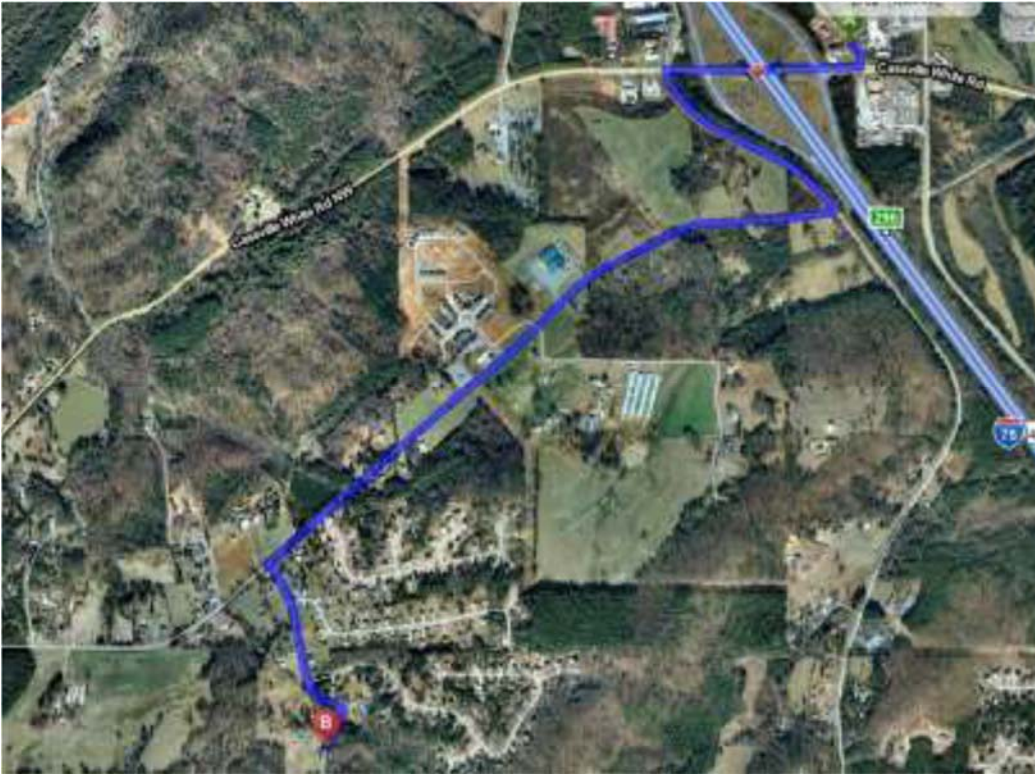
6:30am gates open, parking in lower pasture only unless otherwise directed
6:30-7:00am day of entries taken, check-in and move ups. Run orders will be posted.
7:15am handler's meeting with trial to start immediately afterward

Trial Awards: Flat ribbon for 1st through 4th place and qualifying scores, High Combined Award
Please check the trial table for other prizes not yet specified

ATTENTION EXHIBITORS

All trials will be conducted under the rules and regulations of ASCA Stockdog program. The rule book is available at <http://www.asca.org/wp-content/uploads/sites/35/2016/04/StockdogRules.pdf> or call ASCA at 979-778-1082. Disputes must be brought to the immediate attention of the course director and will in all cases follow the dispute regulations outlined in the ASCA Stockdog rule book, pages 76-83. Bitches in heat will run in draw order. Entry fees will not be refunded in the event a dog is absent, disqualified, excused, or barred from competition by action of the show committee. Entry fees will only be refunded if the refund request is received before the pre-entry closing date, no entry fee will be refunded if the show cannot be opened or completed by reasons of riots, civil disturbances, fire, Acts of God, or public emergency. The show-giving club, the Show Chairman, their agents, officers, and/or committee shall assume no responsibility for injury to children. Judges may be substituted. All dogs must be leashed or crated at all times, except when competing. No electrical and/or mechanical training devices will be permitted on the show grounds. Please clean up after your dogs. For the safety of your dogs and others all dogs must have current vaccinations against rabies, distemper/parvo, you are asked to bring a copy of the rabies certificate with you. There will be a \$35.00 service charge for any returned checks. Refunds issued up to pre-entry deadline. Substitutions allowed with dogs that you own or co own.

This is a private farm, so please treat it with respect.



Directions to show site:
Address for GPS
445 Shinall Gaines Rd NW
Cartersville, GA 30121.
From Interstate 75 take exit
296 (Cassville-White Rd.)
turn West (from Atlanta it's a
left turn).
Turn left on first road—Peoples
Valley Road (if you pass the gas
stations you went too far).
Go .4 miles and turn right on
Old Cass-White Road.
Go 1.3 miles and turn left onto
Shinall Gaines Rd.
Go about .2 miles and farm is
on right.
Look for black gates.

OVERNIGHT PARKING IS NOT AVAILABLE AT TRIAL SITE

Camping: KOA - 800 Cassville White Rd Nw, Cartersville, GA 30121 (770) 382-7330

Hotels Double check pet policy before booking your rooms.

Cartersville North Inn & Suites – 11 Kent Dr NW, Cartersville, GA (770) 386-9259 (Host Motel – ask for 'dog show' rate)

Microtel Inn and Suite – 1348 Joe Frank Harris Pkwy, Cartersville, GA (678) 605-9331 (30 pound limit) Days Inn - 5618 Hwy. 20 Se, Cartersville, GA (770) 382-1824

Best Western Garden Inn & Suites - 5663 Highway 20 NE, Cartersville, GA (770) 386-1569

Hampton Inn - 5600 Hwy. 20 Se, Cartersville, GA (770) 382-8999

Knights Inn - 420 E Church St, Cartersville, GA (770) 386-7263

Quality Inn -235 S. Dixie Ave., Cartersville, GA (770) 386-1361

Red Roof Inn – 28 Hwy 20 Spur, I-75 exit 290, Cartersville, GA (770) 387-1800

Please, no dog washing in the motels, and please pick up after your dog at the motel and show grounds. Be sure to check with your hotel choice about pets prior to booking (pet policies change without notification)

Vet: Westside Animal Hospital, Dr. Lisa Walker 201 Doulthit Ferry Rd. Cartersville, GA 30120 (770) 607-3055

Emergency after hours (770) 547-9153 <http://www.cartersvillevets.com/westside-animal-hospital/>

GAASC Farm Trial 1 – Cattle
Saturday June 9th, 2018

Time: 18 minutes, warnings at 10 and 3 minutes

Tie Breaker: #1 GATHER, #2 SORT

Tasks must be completed in order. Handler is responsible for closing all gates including chute back gate and head gate. Course will start with 5 head of stock in Pens 6, 7 and 8 with all course gates closed.

Task	Points
PEN #1 – move stock from Pen Specified by Judge through Front Alley into Pen 1	6
PEN #2 – move stock from Pen 1 into Pasture	7
TASK #1, FIELD WORK – move stock to driveway end of Pasture, call dog off and move to cone Advanced handler drives stock, Open handler may drive or fetch	20
GATHER – send dog from cone to gather stock into Pen 1 Advanced handler stays at cone until dog is sent, Open handler may move up halfway before sending dog	20
PEN #3 – move stock from Pen 1 into Pen 2	6
SORT – sort 3 marked head into Pen 3 from Pen 2, then reunite all in Pen 2 Sort direction at handler's discretion	25
TASK #2, FOOTBATH – move stock from Pen 2 thru Footbath into Pen 4	20
PEN #4 – move stock from Pen 4 into Chute	6
CHUTE – inspect/doctor stock from Inspection Alley and move through Back Alley into open pen Advanced handler sprays stock for parasites, Open handler inspects stock	20

GAASC Farm Trial 1 – Mixed
Saturday June 9th, 2018

Time: 14 minutes, warnings at 7 and 3 minutes

Tie Breaker: #1 GATHER, #2 SORT

Tasks must be completed in order. Handler is responsible for closing all gates including chute back gate and head gate. Course will start with 5 head of sheep in Pens G, H and J with trailer gate open and all other gates closed, 5 head of ducks in Gather basket.

Task	Points
SHEEP PEN #1 – move stock from Judge Specified Pen through Narrow Alley into Pen E	5
SHEEP PEN #2 – move stock from Pen E through Arena into Pen B Advanced handler must stay close to back fence, Open handler may move anywhere in Arena	10
SHEEP SORT – sort 3 marked head into Pen C from Pen B, then reunite all in Pen B Sort direction at handler's discretion	25
SHEEP TASK #1 TRAILER – move stock from Pen B through Narrow Alley and Pen D to load stock into trailer Unload stock and move stock back through Pen D and Narrow Alley into Pen B (leave trailer gate open)	20
SHEEP PEN #3 – move stock from Pen B through Narrow Alley into open pen	5
Time will stop when stock is in open pen with gate closed. Time will restart when dog is sent for Duck Gather.	
DUCK GATHER – send dog from spigot to gather stock into Large Pen Advanced handler stays at spigot until dog is sent, Open handler may move up halfway before sending dog	20
DUCK TASK #2, FOOTBATH – move stock thru Footbath Advanced handler must stay 5' from Foot Bath until stock enters Footbath, Open handler may move anywhere	20
DUCK CHUTE – move stock into Chute, spray for parasites and release through Large Pen into Pen 1	20
DUCK PEN #4 – move stock from Pen 1 through Pen 2 into Alley	5

GAASC Farm Trial 1 – Sheep
Saturday June 9th, 2018

Time: 14 minutes, warnings at 7 and 3 minutes

Tie Breaker: #1 GATHER, #2 SORT

Tasks must be completed in order. Handler is responsible for closing all gates including chute back gate and head gate. Course will start with 5 head of stock in Pens 6, 7, 8 and 9 with all course gates closed.

Task	Points
PEN #1 – move stock from Pen Specified by Judge through Front Alley into Pen 1	6
PEN #2 – move stock from Pen 1 into Pasture	7
TASK #1, FIELD WORK – move stock to driveway end of Pasture, call dog off and move to cone Advanced handler drives stock, Open handler may drive or fetch	20
GATHER – send dog from cone to gather stock into Pen 1 Advanced handler stays at cone until dog is sent, Open handler may move up halfway before sending dog	20
PEN #3 – move stock from Pen 1 into Pen 2	6
SORT – sort 3 marked head into Pen 3 from Pen 2, then reunite all in Pen 2 Sort direction at handler's discretion	25
TASK #2, FOOTBATH – move stock from Pen 2 thru Footbath into Pen 4	20
PEN #3 – move stock from Pen 4 into Chute	6
CHUTE – inspect/doctor stock from Inspection Alley and move through Back Alley into open pen Advanced handler sprays stock for parasites, Open handler inspects stock	20

GAASC Farm Trial 1 – Ducks
Saturday June 9th, 2018

Time: 12 minutes, warnings at 7 and 3 minutes

Tie Breaker: #1 GATHER, #2 SORT

Tasks must be completed in order. Handler is responsible for closing all gates including chute back gate and head gate. Course will start with 5 head of stock in Gather basket and all gates closed.

Task	Points
GATHER – send dog from spigot to gather stock into Large Pen Advanced handler stays at spigot until dog is sent, Open handler may move up halfway before sending dog	20
PEN #1 – move stock from Large Pen into Pen 1	10
SORT – sort 3 marked head into Pen 2 from Pen 1 then reunite all in Pen 1 Sort direction at handler's discretion	25
PEN #2 – move stock from Pen 1 into Large Pen	5
TASK #1 BRIDGE – move stock over Bridge and clockwise through Underpass Advanced handler must stay behind Underpass until stock enters bridge, Open handler may move anywhere	20
TASK #2, FOOTBATH – move stock from Underpass thru Footbath Advanced handler must stay 5' from Foot Bath until stock enters Footbath, Open handler may move anywhere	20
CHUTE – move stock into Chute, inspect than release through Large Pen into Pen 1	20
PEN #3 – move stock from Pen 1 into Pen 2	5
PEN #4 – move stock from Pen 2 into Alley	5

GAASC Farm Trial 2 – Cattle
Sunday June 10th, 2018

Time: 18 minutes, warnings at 10 and 3 minutes

Tie Breaker: #1 SORT, #2 GATHER

Tasks must be completed in order. Handler is responsible for closing all gates including chute back gate and head gate. Course will start with 5 head of stock in Pens 6, 7 and 8 with all course gates closed and feed in feed bunk.

Task	Points
PEN #1 – move stock from Pen Specified by Judge through Front Alley and Pen 1 into Pen 2	10
SORT – sort 3 marked head into Pen 3 from Pen 2, then reunite all in Pen 1 Sort direction at handler's discretion	25
PEN #2 – move stock from Pen 1 to Pasture	5
TASK #1 FIELD WORK – move stock to feed bunk in Pasture, call dog off and move to cone Advanced handler drives stock, Open handler may drive or fetch	20
GATHER – send dog from cone to gather stock and move stock to Pen 1 Advanced handler stays at cone until dog is sent, Open handler may move up halfway before sending dog	20
PEN #3 – move stock from Pen 1 to Pen 2	5
TASK #2, FOOTBATH – move stock from Pen 2 thru Footbath to Pen 4	20
PEN #4 – move stock from Pen 4 into Chute	5
CHUTE – inspect/doctor stock from Inspection Alley and move through Back Alley to open pen Advanced handler sprays stock for parasites, Open handler inspects stock	20

GAASC Farm Trial 2 – Mixed
Sunday June 10th, 2018

Time: 14 minutes, warnings at 7 and 3 minutes

Tie Breaker: #1 SORT, #2 GATHER

Tasks must be completed in order. Handler is responsible for closing all gates including chute back gate and head gate. Course will start with 5 head of ducks in Pen 3, 5 head of sheep in Pens G, H and J with trailer gate open and all other gates closed.

Task	Points
DUCK PEN #1 – move stock from Pen 3 into Large Pen	6
DUCK TASK #1, FOOTBATH – move stock thru Footbath Advanced handler must stay 5' from Foot Bath until stock enters Footbath, Open handler may move anywhere	20
DUCK CHUTE – move stock into Chute, load stock into Crate and move Crate to Wagon	20
DUCK GATHER – send dog from spigot to gather stock through Large Pen into Pen 1 Advanced handler stays at spigot until dog is sent, Open handler may move up halfway before sending dog	20
DUCK PEN #2 – move stock from Pen 1 through Pen 2 into Alley	6
Time will stop when DUCK Alley gate is closed. Time will restart when gate for SHEEP PEN #3 is opened.	
SHEEP PEN #3 – move stock from Judge Specified Pen through Narrow Alley into Pen B	6
SHEEP SORT – sort 3 marked head into Pen C from Pen B, then reunite all in Pen B Sort direction at handler's discretion	25
SHEEP TASK #1 TRAILER – move stock from Pen B through Narrow Alley and Pen D to load stock into trailer Unload stock and move stock back through Pen D and Narrow Alley into Pen B (leave trailer gate open)	20
SHEEP PEN #4 – move stock from Pen B through Narrow Alley into open pen Advanced handler stays at gate while dog moves stock out of pen, Open handler may move anywhere	7

GAASC Farm Trial 2 – Sheep
Sunday June 10th, 2018

Time: 14 minutes, warnings at 7 and 3 minutes

Tie Breaker: #1 SORT, #2 GATHER

Tasks must be completed in order. Handler is responsible for closing all gates including chute back gate and head gate. Course will start with 5 head of stock in Pens 6, 7, 8 and 9 with all course gates closed and feed in feed bunk.

Task	Points
PEN #1 – move stock from Pen Specified by Judge through Front Alley and Pen 1 into Pen 2	10
SORT – sort 3 marked head into Pen 3 from Pen 2, then reunite all in Pen 1 Sort direction at handler's discretion	25
PEN #2 – move stock from Pen 1 to Pasture	5
TASK #1 FIELD WORK – move stock to feed bunk in Pasture, call dog off and move to cone Advanced handler drives stock, Open handler may drive or fetch	20
GATHER – send dog from cone to gather stock and move stock to Pen 1 Advanced handler stays at cone until dog is sent, Open handler may move up halfway before sending dog	20
PEN #3 – move stock from Pen 1 to Pen 2	5
TASK #2, FOOTBATH – move stock from Pen 2 thru Footbath to Pen 4	20
PEN #4 – move stock from Pen 4 into Chute	5
CHUTE – inspect/doctor stock from Inspection Alley and move through Back Alley to open pen Advanced handler sprays stock for parasites, Open handler inspects stock	20

GAASC Farm Trial 2 – Ducks
Sunday June 10th, 2018

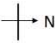
Time: 12 minutes, warnings at 7 and 3 minutes

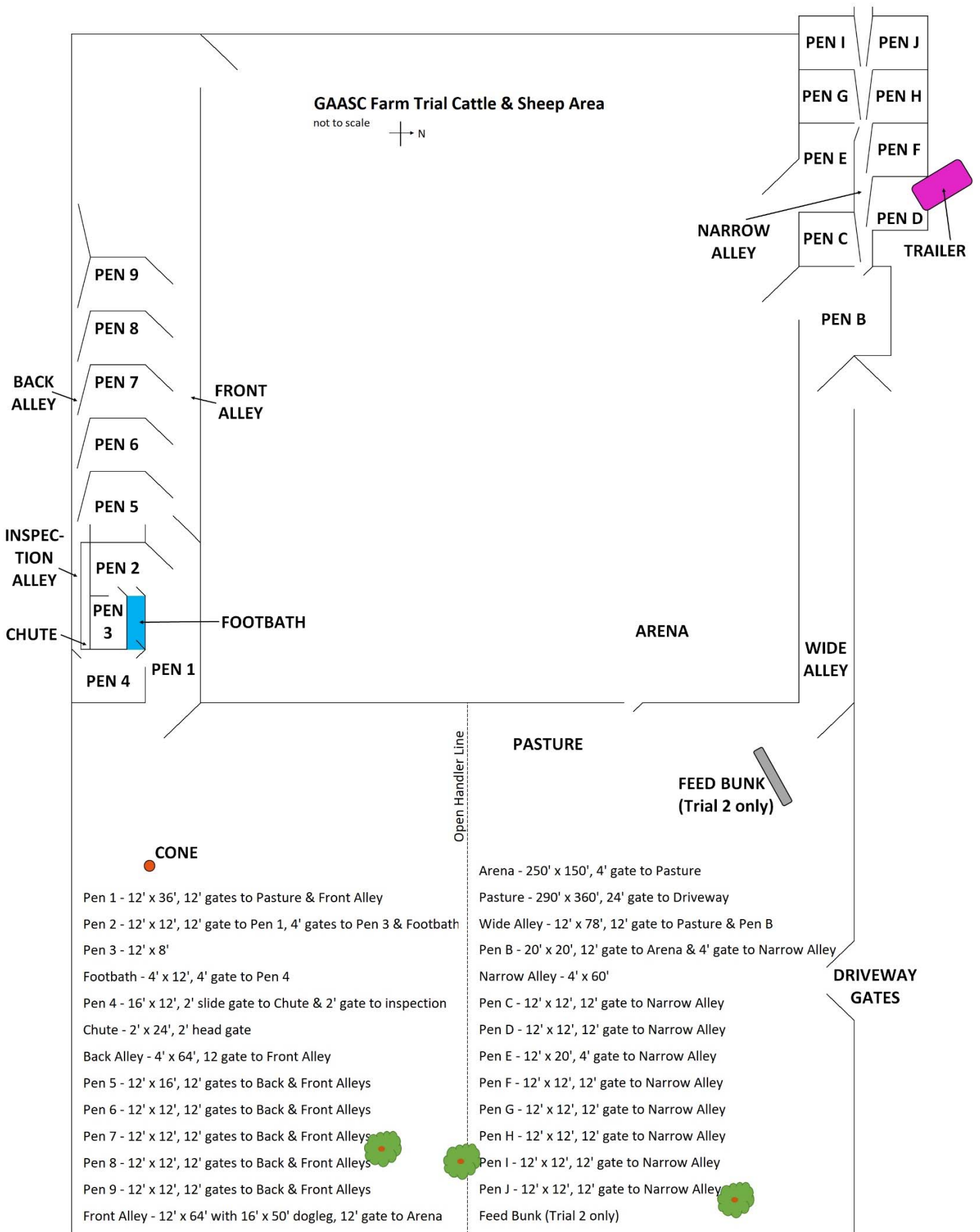
Tie Breaker: #1 SORT, #2 GATHER

Tasks must be completed in order. Handler is responsible for closing all gates including chute back gate and head gate. Course will start with 5 head of stock in Pen 3 and all gates closed.

Task	Points
PEN #1 – move stock from Pen 3 into Large Pen	6
TASK #1 BRIDGE – move stock over Bridge and clockwise through Underpass Advanced handler must stay behind Underpass until stock enters bridge, Open handler may move anywhere	20
TASK #2, FOOTBATH – move stock from Underpass thru Footbath Advanced handler must stay 5' from Foot Bath until stock enters Footbath, Open handler may move anywhere	20
CHUTE – move stock into Chute, load stock into Crate and move Crate to Wagon	20
GATHER – send dog from spigot to gather stock into Large Pen Advanced handler stays at spigot until dog is sent, Open handler may move up halfway before sending dog	20
PEN #2 – move stock from Large Pen into Pen 1	7
SORT – sort 3 marked head into Pen 2 from Pen 1 then reunite all in Pen 1 Sort direction at handler's discretion	25
PEN #3 – move stock from Pen 1 into Pen 2	6
PEN #2 – move stock from Pen 2 into Alley	6

GAASC Farm Trial Cattle & Sheep Area

not to scale 



- CONE**
- Pen 1 - 12' x 36', 12' gates to Pasture & Front Alley
- Pen 2 - 12' x 12', 12' gate to Pen 1, 4' gates to Pen 3 & Footbath
- Pen 3 - 12' x 8'
- Footbath - 4' x 12', 4' gate to Pen 4
- Pen 4 - 16' x 12', 2' slide gate to Chute & 2' gate to inspection
- Chute - 2' x 24', 2' head gate
- Back Alley - 4' x 64', 12 gate to Front Alley
- Pen 5 - 12' x 16', 12' gates to Back & Front Alleys
- Pen 6 - 12' x 12', 12' gates to Back & Front Alleys
- Pen 7 - 12' x 12', 12' gates to Back & Front Alleys
- Pen 8 - 12' x 12', 12' gates to Back & Front Alleys
- Pen 9 - 12' x 12', 12' gates to Back & Front Alleys
- Front Alley - 12' x 64' with 16' x 50' dogleg, 12' gate to Arena

- Arena - 250' x 150', 4' gate to Pasture
- Pasture - 290' x 360', 24' gate to Driveway
- Wide Alley - 12' x 78', 12' gate to Pasture & Pen B
- Pen B - 20' x 20', 12' gate to Arena & 4' gate to Narrow Alley
- Narrow Alley - 4' x 60'
- Pen C - 12' x 12', 12' gate to Narrow Alley
- Pen D - 12' x 12', 12' gate to Narrow Alley
- Pen E - 12' x 20', 4' gate to Narrow Alley
- Pen F - 12' x 12', 12' gate to Narrow Alley
- Pen G - 12' x 12', 12' gate to Narrow Alley
- Pen H - 12' x 12', 12' gate to Narrow Alley
- Pen I - 12' x 12', 12' gate to Narrow Alley
- Pen J - 12' x 12', 12' gate to Narrow Alley
- Feed Bunk (Trial 2 only)

DRIVEWAY GATES

GAASC Farm Trial Duck Area

- Gather ~85'
 - Large Pen - 40' x 90', 3' gate to Gather Area
 - Pen 1 - 8' x 10', 6' gate to Large Pen, 4' gate to Pen 2
 - Pen 2 - 8' x 10', 2' gate to Alley
 - Alley - 2' x 12', 2' gate to Pen 3
 - Pen 3 - 8' x 10', 5' gate to Large Pen
 - Bridge - 10' x 1.5'
 - Underpass - 2' x 2' x 2'
 - Footbath - 3' x 8'
 - Chute - 10' x 2' with 2' front & 3' back gates
 - Crate (Trial 2 only)
 - Wagon (Trial 2 only)
- not to scale

